



**MENIFEE VALLEY ATHLETIC CLUB**  
Meniffee, CA

**Project Summary**

The staff at Meniffee Valley Athletic Club, a fitness facility in Meniffee, CA, made the decision in 2013 to go with new LED lighting products from RVLT for more efficient and brighter lighting. The lighting was extremely poor before the retrofit, and the staff desired better quality lighting throughout the facility, as well as energy savings.

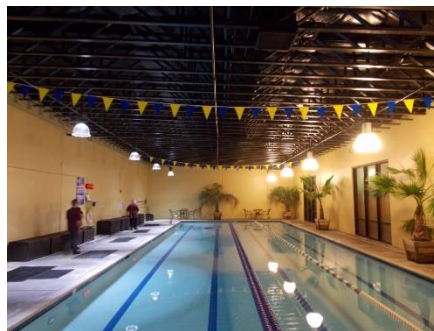
**End User:** Fitness Center

**Application:** Main Area, Pool, Dance Room, Basketball Court, Parking Lot

- Products:**
- 15W LED Tube Lights
  - 100W LED High Bays
  - 125W Cobra Head Streetlights

- Benefits:**
- Annual energy savings: \$11,119
  - Reduced maintenance
  - Reduced energy use
  - Cleaner, brighter appearance
  - Dramatically increased light levels

**Project Overview**



The previous inefficient lighting consisted of high bays and tube lights used for general illumination in the interior of Meniffee Valley Athletic Club. The exterior parking lot also needed more efficient street lighting. The older conventional fixtures were replaced with 44 RVLT LED lighting products. RVLT 15-watt LED tube lights and 100-

watt LED high bay fixtures were installed in the gym, pool, basketball court, dance room and main fitness area. RVLT 125-watt LED cobra head streetlights were installed in the parking lot for brighter illumination.



**Project Overview (cont')**

Existing Fixtures	Replacement Fixtures
Fluorescent Tubes	15W LED Tube Lights
High Bays	100-watt LED High Bays
Parking Lot Street Lights	125-watt LED Cobra Head Streetlights

The facility retrofit returned big results. The interior alone had an annual energy savings of \$9,019. The annual exterior energy savings amounted to \$2,100, adding up to a combined savings of \$11,119 a year.

The overall lighting impact was dramatic. The interior light levels increased 30%, and the exterior color temperature rose from 1,700K to 5,500K. The annual carbon footprint reduction was 10,017 pounds and 60,280 pounds for the exterior and interior, respectively



**Cost Analysis**

**Annual LED Life-Cycle Cost Analysis**

**Annual Energy Savings:**

**\$9,019 interior**  
**\$2,100 exterior**

**Estimated ROI:**

**2.3 years interior**  
**4.5 years exterior**

The owner and staff at Meniffee were delighted with the results of their lighting retrofit.

*“This is how I envisioned our gym looking,” said the owner.*

Under RVLT LED lighting, the fitness facility looks great, requires less maintenance, and uses far less energy than before.



Visit [www.rvlti.com](http://www.rvlti.com) for more information.

*Numbers are calculated at the time of installation and may not reflect current upgrades to lighting fixture components.*