



Project Summary

A six-story U.S. federal building in the Midwest needed a change desperately. Every year, the electricity to run the building's lights costs taxpayers more than \$38,000. More than 5,200 outdated T8 fluorescent tube lamps, which also required regular lamp and ballast replacements, lit up most of the space. Tired of overspending and continuously replacing lighting products, the federal building turned to RVLT for better lighting options.

End User: Federal Building

Application: Offices, Hallways, Conference Rooms, Elevators, Electrical Rooms

Products:

- 15W 4-ft. LED Tube Lights
- 8W 2-ft LED Tube Lights
- 2W LED Household Lamps

Benefits:

- Dramatic energy savings
- Increased light levels
- Reduced maintenance
- Cleaner, brighter appearance
- Lower HVAC costs

Project Overview



RVLT provided a bright, efficient solution with its 15-watt LED tube lights. RVLT replaced every interior light in the building, which included the basement, elevators, lobbies, stairwells, hallways, offices, and other common areas.

Immediately after the RVLT retrofit, the facility realized a 50% reduction in lighting energy costs. When

combined with the money saved on maintenance and lamp replacements, the cost of retrofitting the entire building with long-lasting, energy-efficient LED lighting could be recouped in just a few years.



con't 

Project Overview (con't)

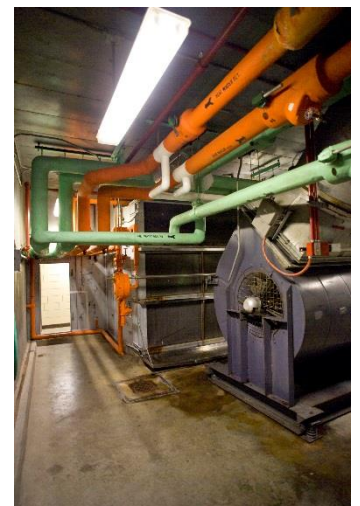
Existing Fixtures	Replacement Fixtures
T8 Fluorescent Tubes	4 ft. 15W Double End Power LED Tube 2 ft. 8W Double End Power LED Tube
Incandescent Bulbs	8.2W LED Household Lamps

RVLT's 15-watt LED tube light has a rated lifetime of 50,000 hours and carries a five-year warranty. Running for 12 hours a day, 285 days a year, these lamps are expected to last for over 14 years. In a least one Midwestern U.S. federal building, lighting maintenance will no longer be a nightmare

Annual Energy Savings: \$19,000

Estimated ROI: 3 years

Cost Analysis



Visit www.rvlti.com for more information.

Numbers are calculated at the time of installation and may not reflect current upgrades to lighting fixture components.